

LOUVE SQUARE PIVOT SHOWER SCREEN

PLEASE READ CAREFULLY AS NOT ALL INSTRUCTIONS ARE THE SAME



Style	Matt Black	Chrome	Size	Range (mm)
Front	LS82FMB	LS82FC	820 x 2000	750 - 810
	LS90FMB	LS90FC	900 x 2000	835 - 890
	LS10FMB	LS10FC	1000 x 2000	935 - 990
	LS12FMB	LS12FC	1200 x 2000	1145 - 1195
	LS15FMB	LS15FC	1480 x 2000	1445 - 1495
Return	LS82RMB	LS82RC	820 x 2000	770 - 800
	LS90RMB	LS90RC	900 x 2000	850 - 885
	LS10RMB	LS10RC	1000 x 2000	950 - 985
	LS12RMB	LS12RC	1200 x 2000	1150 - 1185

AVAILABLE IN 5 SIZES:

- 820 x 820
- 900 x 900
- 1000 x 1000
- 1200 x 900
- 900 x 1200
- 1500 x 900

Chrome Finish



Matte Black Finish



LOUVE SQUARE PIVOT SHOWER SCREEN

PLEASE READ CAREFULLY AS NOT ALL INSTRUCTIONS ARE THE SAME



GENERAL INFORMATION

Please inspect the product immediately upon receipt for transit damage, missing packs/parts or manufacturing fault. Damage reported later cannot be accepted. Please handle the product with care avoiding knocks and shock loading to all sides and edges of the glass.

Notes: Safety glass can not be re-worked.

Please read these instructions carefully before start of installation. Special care should be taken when drilling walls to avoid hidden pipes or electrical cables. Note: This product is heavy and may require two people to install.

Aftercare instructions

After use, your shower should be cleaned with soap and water. This is particularly important in hard water districts where insoluble lime salts may be deposited and allowed to build up. Cleaners of a gritty or abrasive nature should not be used. Care should be taken to avoid contact with strong chemicals such as organic solvents and strippers.

Glass cleaners can be used but with caution, if in doubt contact the manufacturer of the cleaner in question.

Please keep these instructions for aftercare and customer service details.

TOOLS REQUIRED



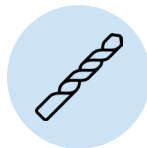
SILICONE



SPIRIT
LEVEL



DRILL



6MM
DRILL BIT



FLAT
SCREWDRIVER



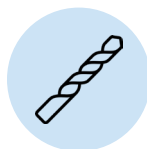
TAPE
MEASURE



PENCIL



HAMMER



3.2MM
DRILL BIT



PHILLIPS HEAD
SCREW DRIVER



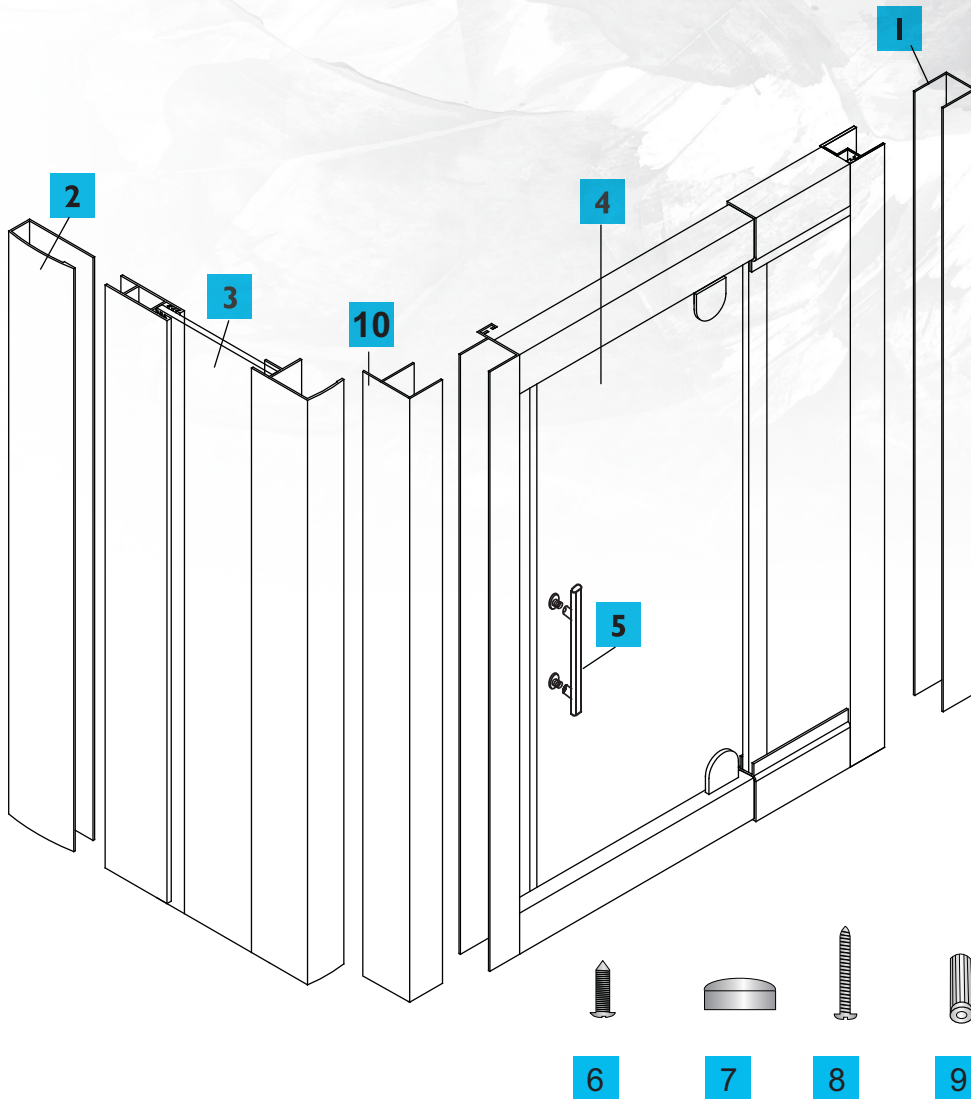
THIS PRODUCT IS HEAVY AND MAY REQUIRE TWO PEOPLE TO INSTALL.

LOUVE SQUARE PIVOT SHOWER SCREEN

PLEASE READ CAREFULLY AS NOT ALL INSTRUCTIONS ARE THE SAME



ASSEMBLY DRAWING



REQUIRED PARTS

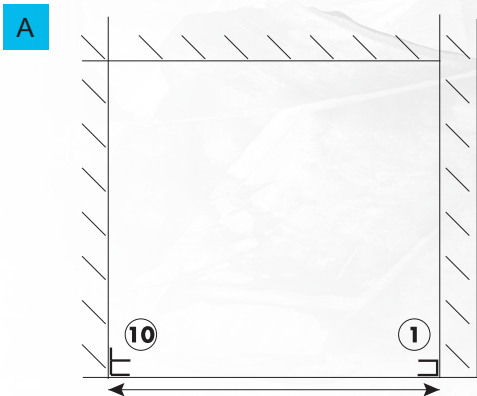
- | | | | |
|----------|------------------------------|-----------|---|
| 1 | 1 x Door front assembly jamb | 2 | 1 x Fixed panel wall jamb |
| 3 | 1 x Fixed side panel | 4 | 1 x Door front assembly |
| 5 | 1 x Handle set | 6 | 15 x Fixed panel screws - 8mm |
| 7 | 19 x Fixed panel screw caps | 8 | 8 x Wall jamb fixing screws - 35mm |
| 9 | 8 x 6mm wall plugs | 10 | Wall jamb is for front door only installation |

LOUVE SQUARE PIVOT SHOWER SCREEN

PLEASE READ CAREFULLY AS NOT ALL INSTRUCTIONS ARE THE SAME



FRONT DOOR ONLY STEP 1

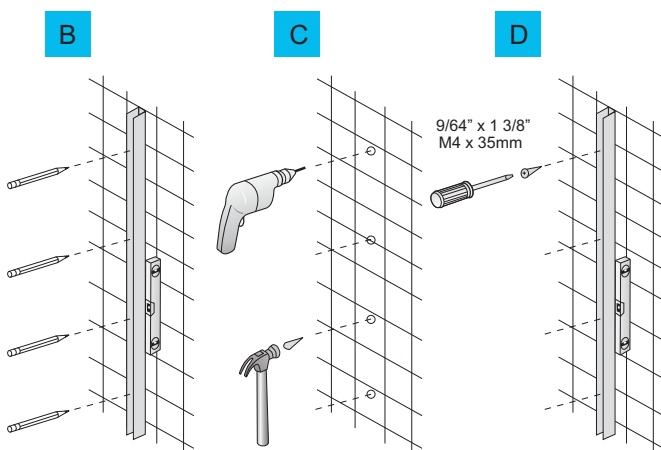


A Measure your shower base / shower area. The measurement to the outside edge of the wall jambs (1 & 10) should be somewhere within the minimum and maximum of the screen size. See chart to the left.

Note: If using the maximum size make sure that you allow for walls that may be out of plumb. If your walls are 10mm out of plumb reduce your screen size area by this amount.

Minimum	Maximum	Model	Range (mm)
750 mm	810 mm	820	Front Set
835 mm	890 mm	900	Front Set
935 mm	990 mm	1000	Front Set
1145 mm	1195 mm	1200	Front Set
1445 mm	1495 mm	1480	Front Set

STEP 2



B Using a level ensure jambs (1&10) are plumb then mark the outside edge with a pencil. Then mark your pre-drilled screw holes that are on the inside of the jamb (1) and on the tab of jamb (10). Tab to be on the inside of shower. See diagram Above.

C Remove jambs and drill 6mm holes into walls with drill bit. Insert plastic wall plugs (9) that are provided. **Note:** Please use the correct or most suitable fixing for the surface you are screwing into, to ensure the jamb is securely fixed to the wall eg. toggle wall plug.

C Using a level, ensure jambs (1) is plumb and the holes in the jamb line up with the holes in the wall. Fix jamb to wall using the screws provided (8).

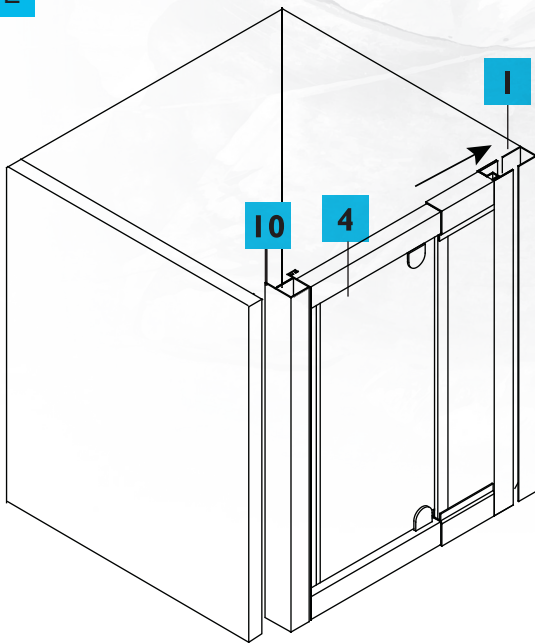
LOUVE SQUARE PIVOT SHOWER SCREEN

PLEASE READ CAREFULLY AS NOT ALL INSTRUCTIONS ARE THE SAME



FRONT DOOR ONLY STEP 3

E



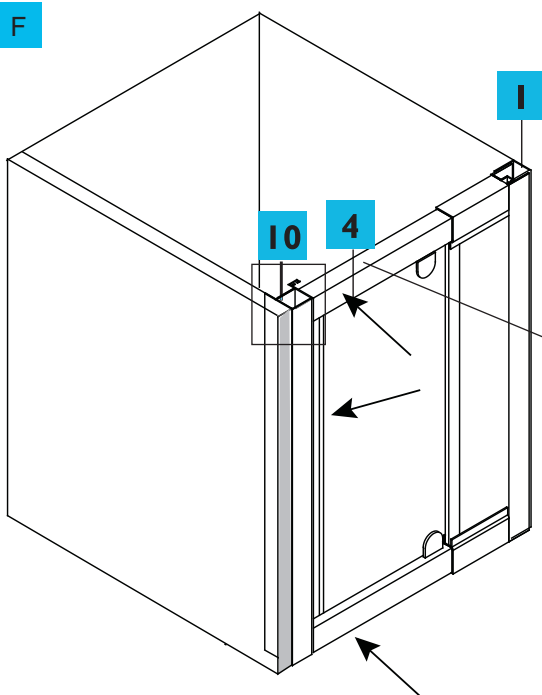
E Slide front assembly (4) into jamb (1)

Hint: insert top or bottom corner first then you will find that rest of the panel will slide in easily.

Slide jamb (10) onto the other end of the front assembly and make sure the tab is to the inside of the shower area. See picture

STEP 4

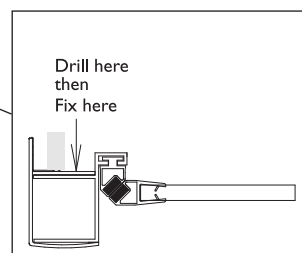
F



F Pivot the front assembly (4) into position and line up wall jamb (10) with the holes in the wall and the pencil line. Fix jamb (10) to the wall using the screws provided (8).

Continue to step G on page 8 for further installation instructions

Aerial View

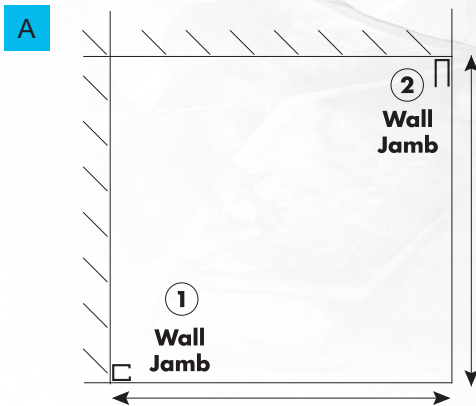


LOUVE SQUARE PIVOT SHOWER SCREEN

PLEASE READ CAREFULLY AS NOT ALL INSTRUCTIONS ARE THE SAME



2 SIDED INSTALLATION STEP 1



A Measure your shower base / shower area. The measurement to the outside edge of the wall jamba (1 & 2) should be somewhere within the minimum and maximum of the screen size. See chart to the left.

Note: If using the maximum size make sure that you allow for walls that may be out of plumb. If your walls are 10mm out of plumb reduce your screen size area by this amount.

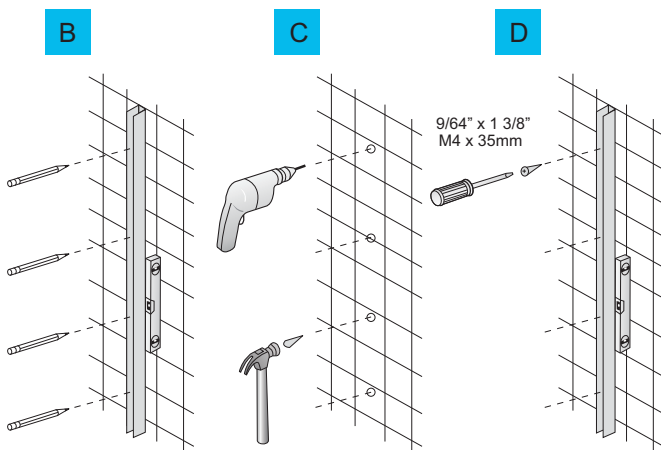
Front Assembly

Min	Max	Model	Set Type
750 mm	810 mm	820	Front Set
835 mm	890 mm	900	Front Set
935 mm	990 mm	1000	Front Set
1145 mm	1195 mm	1200	Front Set
1445 mm	1495 mm	1480	Front Set

Side Assembly

Min	Max	Model	Set Type
770 mm	800 mm	820	Side Panel
850 mm	885 mm	900	Side Panel
950 mm	985 mm	1000	Side Panel
1150 mm	1185 mm	1200	Side Panel

STEP 2



B Using a level ensure jamb (1&2) are plumb then mark the outside edge with a pencil. Then mark your pre-drilled screw holes that are on the inside of the jamb.

C Remove jamb and drill 6mm holes with drill bit. Insert plastic wall plugs (9) that are provided.

Note: Please use the correct or most suitable fixing for the surface you are screwing into, to ensure the jamb is securely fixed to the wall eg. toggle wall plug.

D Using a level, ensure jamb (1 & 2) are plumb and the holes in the jamb line up with the holes in the wall. Fix jamb to wall using the screws provided (8).

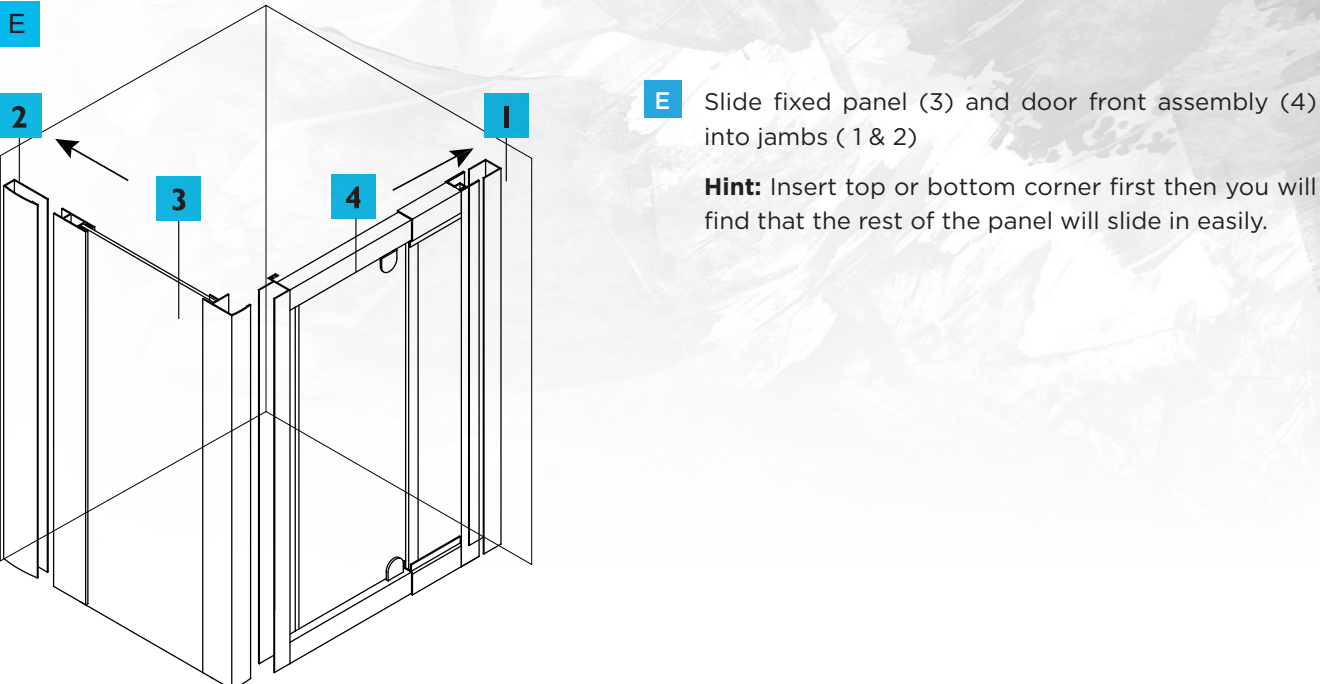
LOUVE SQUARE PIVOT SHOWER SCREEN

PLEASE READ CAREFULLY AS NOT ALL INSTRUCTIONS ARE THE SAME

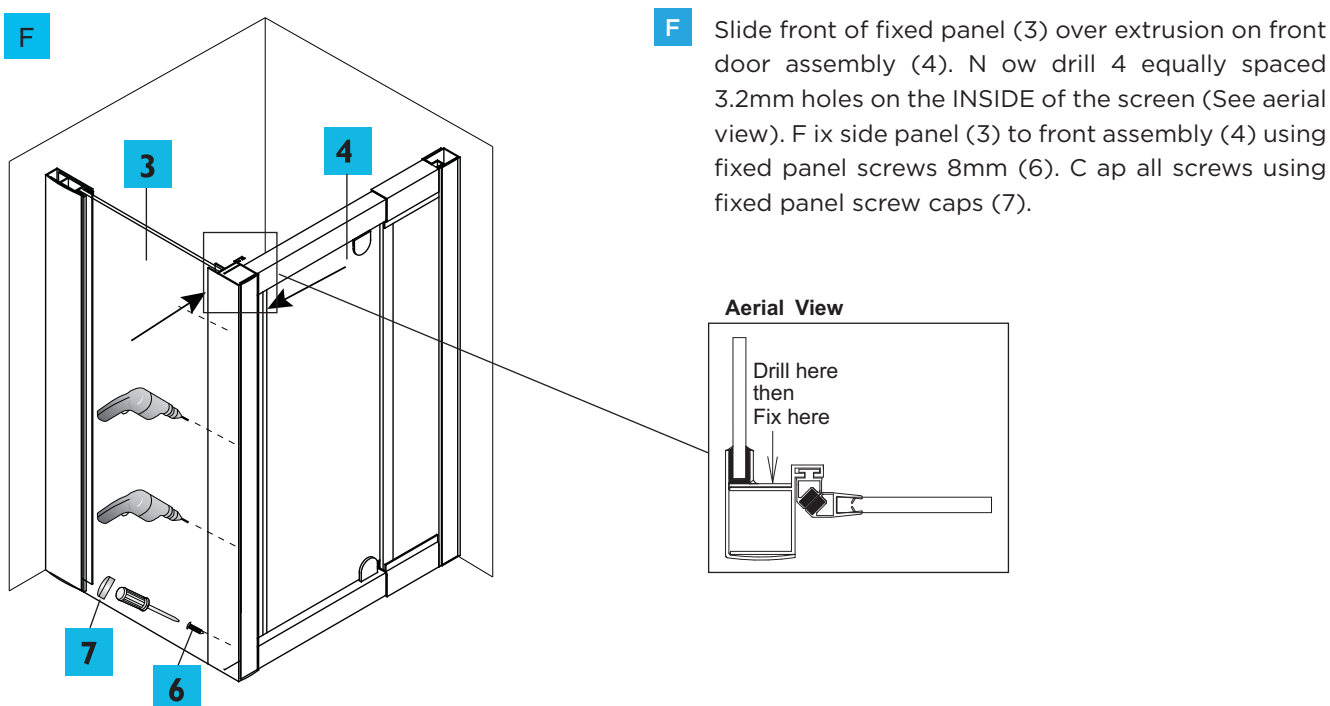


2 SIDED INSTALLATION

STEP 3



STEP 4

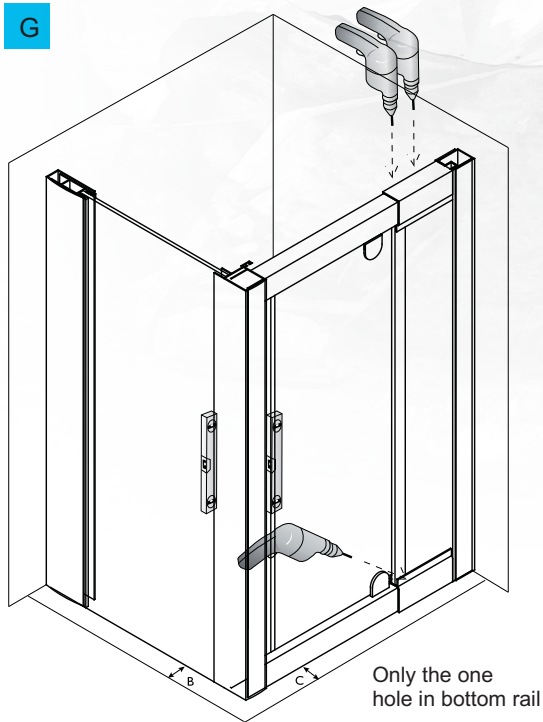


LOUVE SQUARE PIVOT SHOWER SCREEN

PLEASE READ CAREFULLY AS NOT ALL INSTRUCTIONS ARE THE SAME

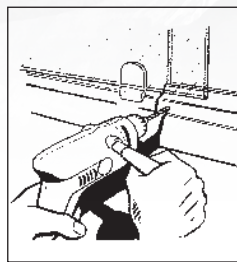


2 SIDED INSTALLATION STEP 5

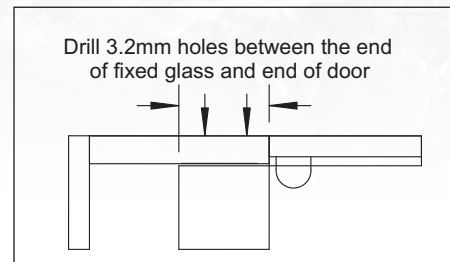


G Adjust front assembly and fixed side panel so $B=C$. This is done by sliding the fixed panel in or out of the wall extrusion for the fixed side. For the front, the top and bottom rails of the front assembly slide apart for adjustment.

Now fix off the bottom rail at the location pictured on the inside of the screen. Use a level to ensure front assembly and side panel are vertical. Now drill 3.2mm holes then fix with screws (6) as shown to top rail of front assembly.

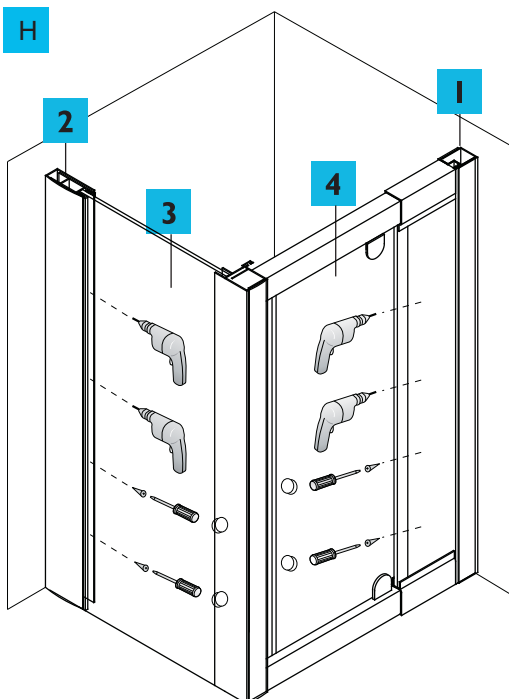


INSIDE SHOWER VIEW



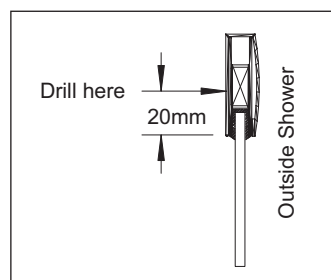
FRONT SHOWER VIEW

STEP 6



F Now drill 4 equally spaced 3.2mm holes into the wall jamba (1 & 2) on the INSIDE of the screen. Make sure that your drill holes are more than 20mm back from the glass edge, when using smallest screen size, otherwise you may break the glass. Make sure that the holes also go through the aluminium of the fixed side panel and the door front assembly.

Fix off wall jamba (1 & 2) to fixed side panels (3 & 4) using fixed panels screws (6) and covering them with caps (7) provided.



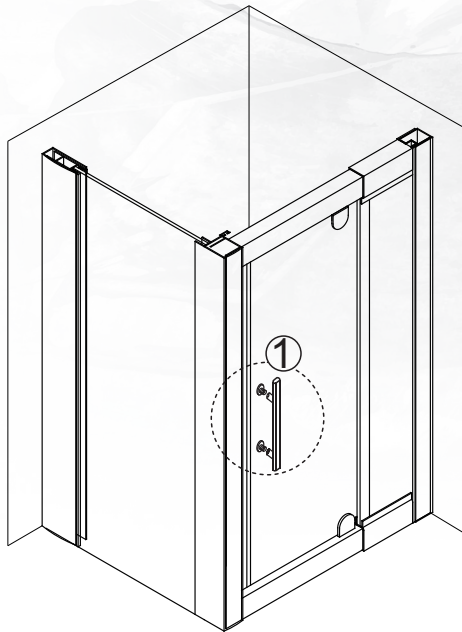
LOUVE SQUARE PIVOT SHOWER SCREEN

PLEASE READ CAREFULLY AS NOT ALL INSTRUCTIONS ARE THE SAME

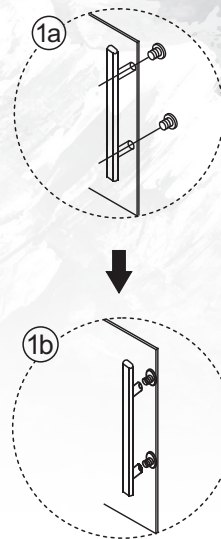


2 SIDED INSTALLATION STEP 7

I

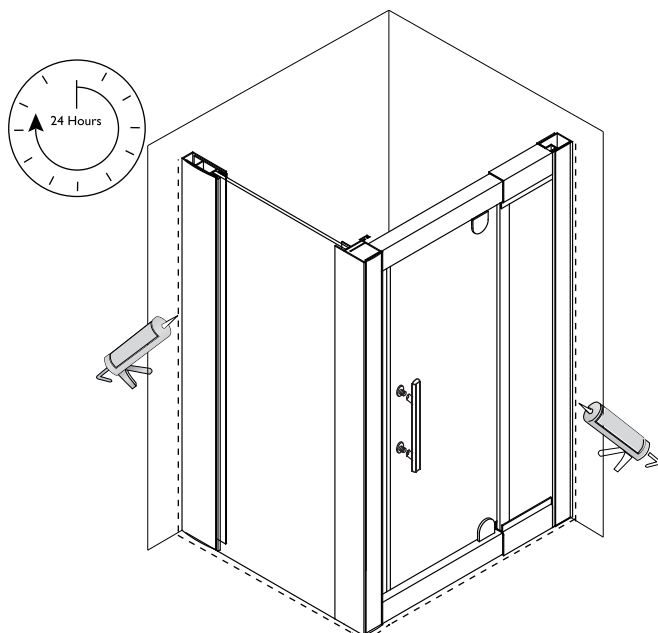


I



STEP 8

J



J

Apply silicone sealer around all external joints of shower screen and allow 24 hours for silicone to set.

Silicone is not used on the inside of the shower screen because in time water can build up within the wall jamb and make the screen leak out of the shower area. The screens are designed to allow water to return into the shower area if any present.

Screen are not sealed on the inside, will void warranty.